

Infrared Ultrathin Thickness Meter IRMT01



Measure online / continuously the ultra thin film under 10μm!

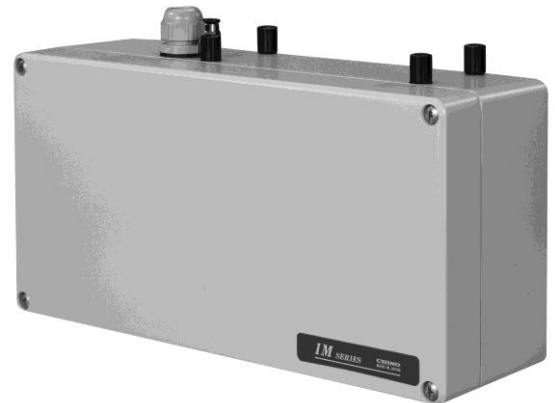
Infrared Ultra thin Thickness Meter is a contact / online model thickness meter that can continuous / high sensitivity measure the film and coating paint under 10μm.

■ FEATURES

- **Adopt P polarized light and high sensitivity optics**
By eliminating the surface reflectance, it realizes the high accuracy / high sensitivity measurement.
- **Output updating cycle 28ms, high-speed measurement**
Real time measurement on the production line.
- **Extend the measuring distance**
Set the measuring distance as 50mm (our current model 25mm) to reduce the effect of the fluctuating measuring distance.
- **Load self-diagnostic function**
Output self-diagnostic and easy maintenance.
- **Prepare Setting display unit and Software package**
RS485 is standard equipped. Communicates with the setting display unit and digital display the measured value, operates various setting, multi-calculation function and alarm.
Software Package for the PC is also optionally prepared.

■ Application

- **Film**
 - Measuring the thickness of ultrathin film.
 - Measuring the thickness of solvent coating / resin adhesion
- **Metal**
 - Measuring the thickness of organic film coating/ oiling on the metal plate.
 - Measuring the thickness of corrosion film / insulating film on the steel plate.



Detector



Setting display unit

■ Models

- **Detector**
IRMT01
- **Setting Display Unit**
IRGMEG3□

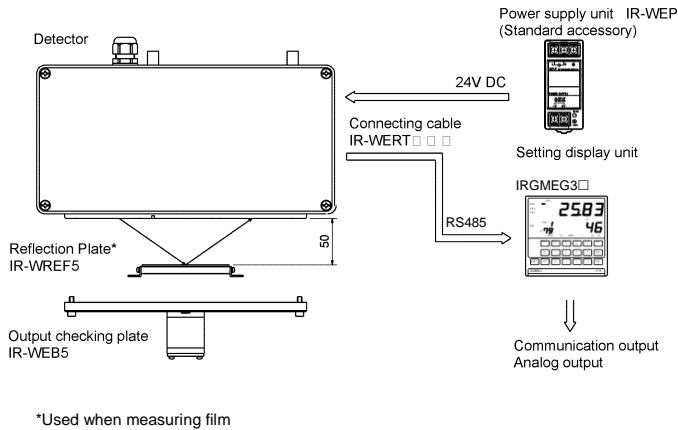
□ Communication Interface

R : RS232C (standard)

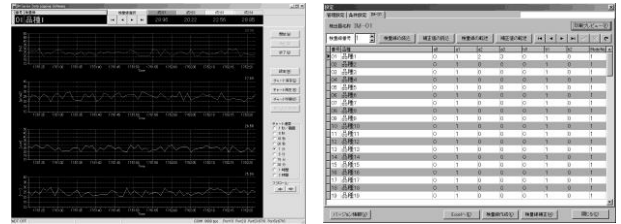
A : RS422A

S : RS485

■ Configuration



■ Software package IR-WEF2



- **Main screen**
Measured data digital display, trend display, alarm display, status display.
- **Setup screen**
Set the selected variety of upper and lower limit/decimal points/ calibration data register/switch/ communication setting.
- **Calibration curve screen**
Creates the calibration curve and check the calibration data.

■ General Specifications

● **Detector**

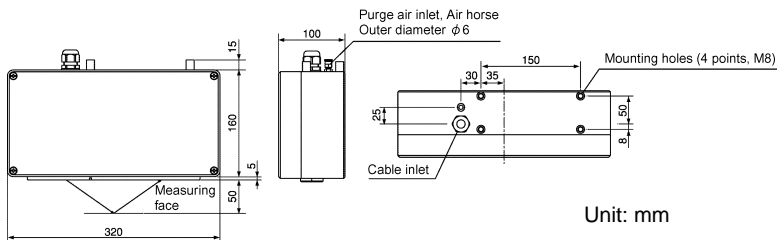
Model: IRMT01
 Measuring system: Infrared ray 3 wavelengths, P polarized light
 Light source: Tungsten lamp
 Measuring area: Approx. 12 x 20 mm (at measuring distance 50 mm)
 Communications: RS485 (MODBUS)
 Output renewal cycle: 28ms
 Working temperature: 0 to 40°C
 Power supply: 24V DC
 Power consumption: Max. 33VA
 Connection: Power supply, single-line: terminal connection
 Casing: Aluminum casting
 Weight: Approx. 7kg
 Mounting: Bolt suspension method with 4 pieces of M8 bolts
 Protection structure: Dust proof, water proof (conform to IP65)

● **Setting display**

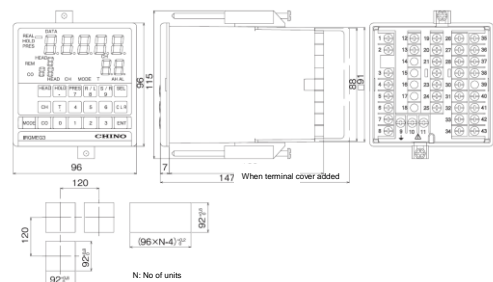
Model: IRGMEG3 □
 Input signal: RS485
 Output signal: Analog output: 4 to 20mA DC, 2output, Load resistance less than 500Ω
 Communication output: Select one from RS232C, RS422A or RS485
 Display: Measured data (LED 5-digit), Detector No., CH No., Parameter setup
 Working temperature: 0 to 50°C
 Power supply: 100 to 240V AC 50/60HZ
 Power consumption: Max. 15VA
 Connection: Power supply, signal-line: terminal connection
 Weight: Approx. 0.6 kg
 CE marking: IRGMEG3R (RS232C output model) only
 EMC directive --- EN61326-1 Class A
 Low voltage directive --- EN61010-1, EN61010-2-030
 RoHS directive --- EN50581

■ External dimensions

● **Detector**



● **Setting display unit**



Specifications subject to change without notice. Printed in Japan. 2020. 11

CHINO CORPORATION

32-8, KUMANO-CHO, ITABASHI-KU, TOKYO 173-8632
 PHONE: +81-3-3956-2171
 FAX: +81-3-3956-0915
 E-mail: inter@chino.co.jp
 Website: http://www.chino.co.jp